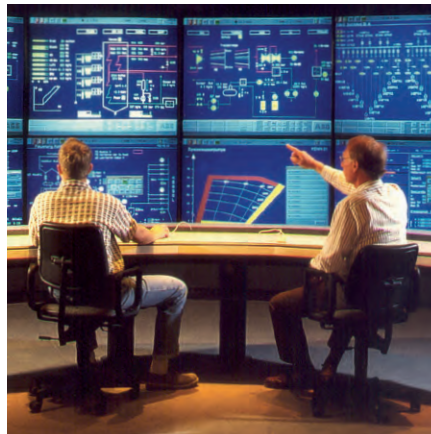


INFORMATION SECURITY MANAGEMENT SYSTEM (ISMS)

Shaping our world



IT Security in Power Infrastructure

How secure is your data?

Cyber attacks on power plants and electrical grids occur every day and endanger their availability.

In the energy sector, large quantities of sensitive data are distributed via spatially extended networks. In addition to the proprietary systems used, standard IT technologies are increasingly being applied. The degree of cross-linking and the volume of data are constantly growing, and thus also the vulnerability to cyber attacks.

Security by system – ISO/IEC 27001

Did you already take protective measures? Did you choose the appropriate measures?

Identifying and organising appropriate measures in a systematic approach is crucial for effective and sustainable protection. For this purpose, the standard ISO/IEC 27001 defines the requirements for an adequate Information Security Management System (ISMS).

An ISMS is a system of guidelines, procedures, regulations, and resources based on risk assessment. It serves the purpose to define, maintain and continually improve information security in a lasting manner.

For particularly vulnerable and vital infrastructure such as power plants, power grids or even banks, the legislature in Germany and in many other countries prescribe protective measures, the key demand of which is a systematic approach in the form of an ISMS.

69%

of all companies have been victims of cybercrime in the past 2 years

Source: Bitkom

€ 22bn.

Damage per year caused by cybercrime for the German industry

Source: Bitkom

>50%

Negligence is the main cause for cyber incidents

Source: ENSIA

Top 10 Threats Industrial Control Systems	Trends 2016
1. Social Engineering and Phishing	↑
2. Infiltration of malware by using removable storage devices and external hardware	→
3. Infection with malware via the internet and the intranet	↓
4. Intrusion via remote maintenance access	↑
5. Erroneous human action and sabotage	↓
6. Internet-connected control components	→
7. Technical failure and force majeure	→
8. Compromise of extranet and cloud components	↑
9. (D)DoS attacks	↑
10. Compromise of smartphones in the production environment	↓

Source: BSI, Germany 08.2016

Competences from one Single Source

Main ISMS Components



Management
Responsibility



Awareness, Training
and Communication



ISMS
Policy



Asset
Inventory



Risk-based
Approach



Measures,
Implementation



Continuous
Improvement



Audits &
Management Reviews

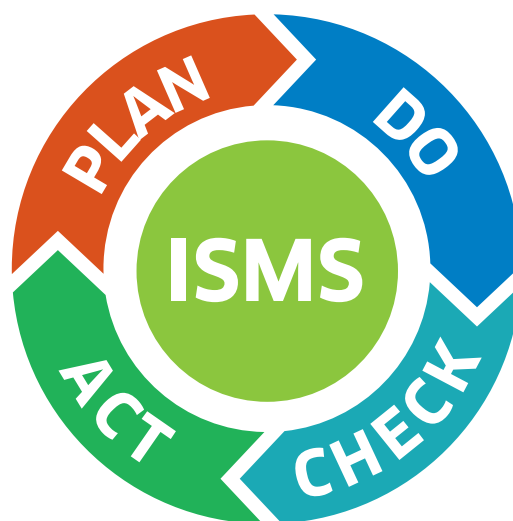
Our approach to an ISMS is characterised by technology and is based on the experience of our engineers

In the fields of energy as well as energy transmission and distribution, Lahmeyer has been one of the world's leading engineering companies for many years (no. 4 and no. 2, source: ENR Global Ranking Sourcebook 2016, USA).

Lahmeyer International offers a broad range of engineering services with all related disciplines from over 30 specialist fields and certified ISMS and IT experts from one single source as well as a strong network of partner companies.

Our Services for Information Security / ISMS

- Initial Workshop
- Gap Analysis and Implementation Planning
- Scope and Asset Definition
- Risk Methodology and Assessment
- Preparation of ISMS Documentation
- Awareness Campaigns
- Penetration Tests
- Audits & Reporting
- ISMS Project Management
- Coaching/Consultancy for your ISO and ISMS Teams
- Provision of an External Information Security Officer (ISO)
- Emergency Planning (BCM) and Security Operation Center



Lahmeyer – A Company of Tractebel

At the helm of the Energy Transition, Tractebel provides a full range of engineering and consulting services throughout the life cycle of its clients' projects, including design and project management. As one of the world's largest engineering consultancy companies and with more than 150 years of experience, it's our mission to actively shape the world of tomorrow. With about 4,500 experts and offices in 33 countries, we are able to offer our customers multidisciplinary solutions in energy, water and infrastructure.

Since December 2014, Lahmeyer belongs to Tractebel and thus is part of the international ENGIE group headquartered in Paris. Tractebel, which is based in Brussels, and Lahmeyer, which is based in Bad Vilbel near Frankfurt, cooperate on numerous international projects and keep growing closer as one company.

Lahmeyer International GmbH

Friedberger Str. 173
61118 Bad Vilbel, Germany

Phone: +49 6101 55-0
Fax: +49 6101 55-2222
info@de.lahmeyer.com
www.lahmeyer.de
blog-tractebel.lahmeyer.de

